

Addams Elementary

5323 S. 65th West Avenue

Tulsa, OK 74107



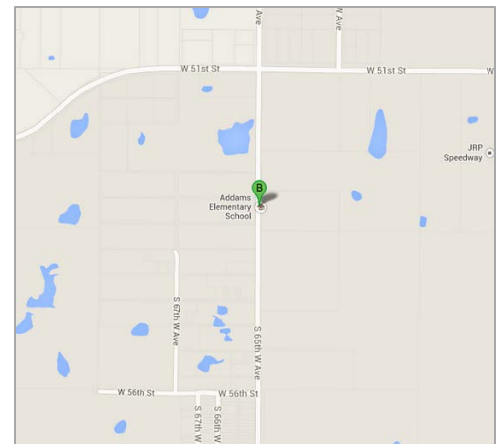
Constructed: 1961

Building area: 41,656 ft²

Lot area: 10.0 acres MOL

Zoning:

List Price: \$1,190,000

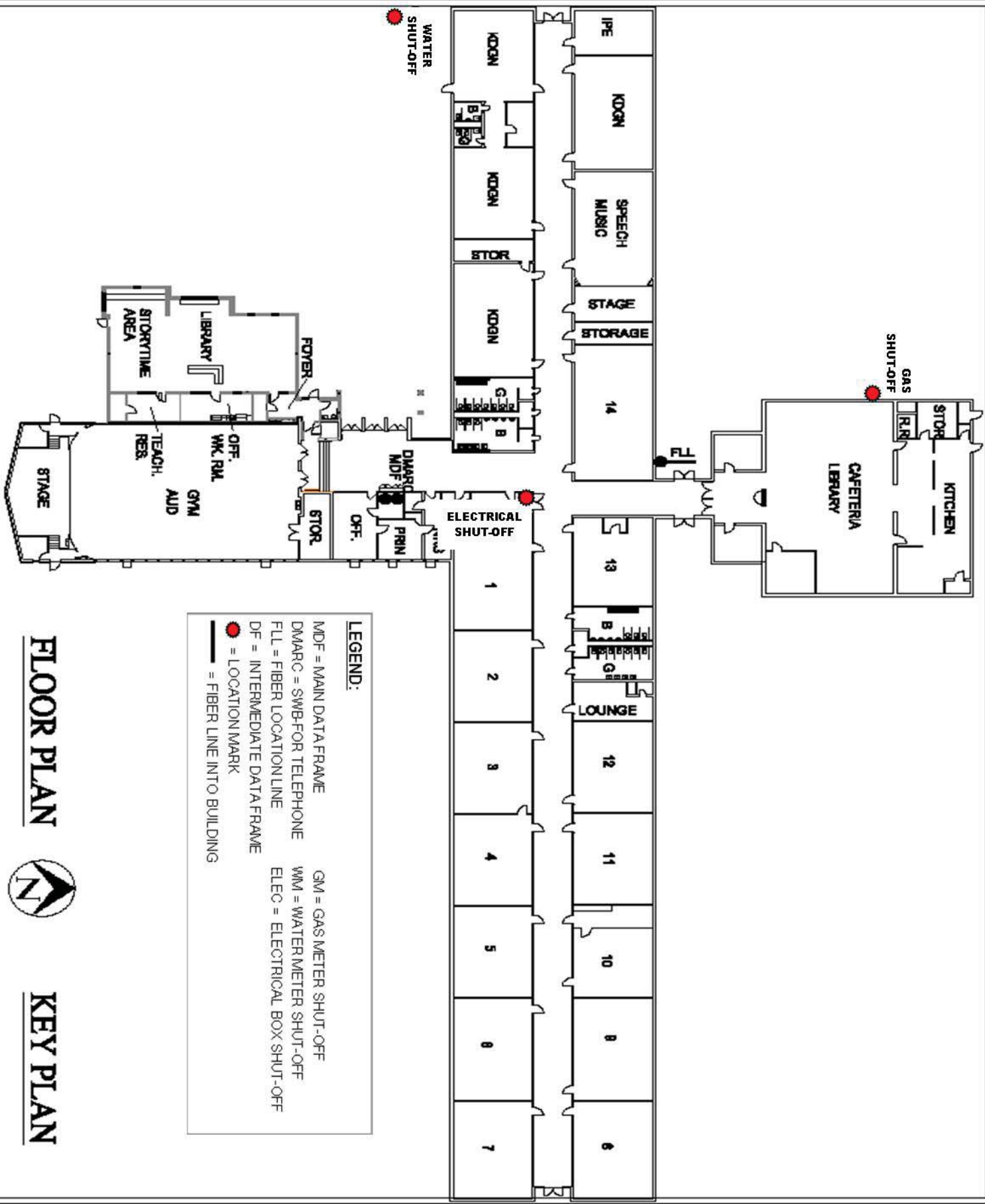


View more available TPS properties at

www.tulsaschools.org/properties4sale.

Contact properties@tulsaschools.org for more information or to make an offer.

NO WARRANTY OR REPRESENTATION, EXPRESS OR IMPLIED, IS MADE AS TO THE ACCURACY OF THE INFORMATION CONTAINED HEREIN, AND THE SAME IS PROVIDED SUBJECT TO ERRORS, OMISSIONS, CHANGE OF PRICE, OTHER CONDITION, OR WITHDRAWAL WITHOUT NOTICE. NO WARRANTIES OR REPRESENTATIONS ARE MADE AS TO THE CONDITION OF THE PROPERTY OR ANY HAZARDS CONTAINED THEREIN



LEGEND:

MDF = MAIN DATA FRAME
 DMARC = SWB-FOR TELEPHONE
 FLL = FIBER LOCATION LINE
 DF = INTERMEDIATE DATA FRAME
 ● = LOCATION MARK
 — = FIBER LINE INTO BUILDING

GM = GAS METER SHUT-OFF
 WM = WATER METER SHUT-OFF
 ELEC = ELECTRICAL BOX SHUT-OFF

FLOOR PLAN



KEY PLAN

SHBRT 1 OF 1	TPS UPDATED 1/2013	JANE ADDAMS ELEMENTARY 5323 SOUTH 65 WEST AVE.	TULSA PUBLIC SCHOOLS INDEPENDENT SCHOOL DISTRICT NUMBER ONE
	249		